



# Shubham

TECHNOCAST





# Shubham

TECHNOCAST



# ABOUT

---

## SHUBHAM TECHNOCAST



The seeds of **Shubham Technocast** were sown in 2014 by the Shubham Group, with production capacity of 240 Tons of Lost Wax Investment Castings per annum. Since then we have progressed exponentially and today the company produces 720 Tons of lost wax Investment Castings per annum. Till now we have developed more than 5000 components weighing from 0.050gms. to 70kgs. of ferrous and non-ferrous castings with 100+ metal grades applicable to a wide range of Industries and today we are one of the largest manufacturers of lost wax investment castings in INDIA.

**Shubham Technocast** is having inhouse precision machining shop equipped with latest CNC , VMC & Lathe Machines with adequate QA/QC measuring instruments including CMM & Hydro-Pressure Testing Machine.

This success and continuous growth was only possible because of our commitment to produce best quality Investment Castings with on time deliveries to our customers.

# VISION

We shall strive to be leaders in this business by offering products of a world class quality, and through constant technological innovation. We understand the needs of our customers and shall stay focused on them by offering them products, service and solutions of the highest quality.



# MISSION

- ❶ To develop long-term business relations with customers.
- ❷ Poised to be Global Investment casting manufacturer.
- ❸ To grow steadily and becoming profitable gradually.



# GROUP OF COMPANIES





# OUR STRENGTHS :

## **MANUFACTURING PROCESS**

Lost Wax

## **SIMULATION SOFTWARE**

Softcast

## **TYPE OF FURNACE**

Medium Frequency Induction  
Furnace( Inductotherm Make)

## **WEIGHT RANGE**

Few Gms To 100 Kg/Pc.

## **MONTHLY CAPACITY**

60 Tons/Month.

## **GRADES MANUFACTURED**

CS, LAS, SS, Duplex,  
Super Duplex, Heat Resistant,  
Customized

## **NDT FACILITIES**

In House UT/MPT/DPT/  
RT(Ir - 192 & Co - 60)

## **TESTING FACILITY**

In House Chemical &  
Mechanical Testing Lab.

## **MACHINE SHOP**

In House VMC, TC, HMC,  
Boring & VTL Facility.

## WHY

### SHUBHAM TECHNOCAST

Our Manufacturing Facilities include in-house CNC machining, induction Hardening, Surface Hardening, Electroplating, polishing etc.

We consider client satisfaction as our main aim and to achieve that aim we offer high quality standard and customized products to our valued clients.

We are proud to acknowledge a talented and experienced team of professionals who have helped us to provide wide products.

We are capable of supplying large volume, fully machined, ready-to-assemble parts to automotive and other customers.







# INVESTMENT CASTING PROCESS

**DIE MAKING**



**WAX ASSEMBLY**



**DE-WAXING**



**WAX INJECTION**



**SHELLING**

**MELTING & POURING**



**FETTLING**



**FINAL INSPECTION**



**KNOCK OUT**

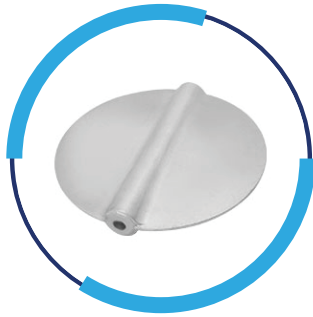
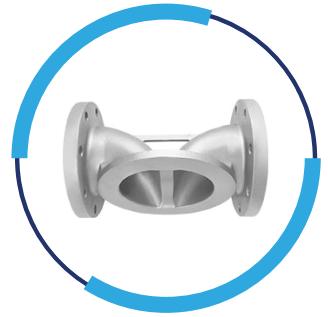
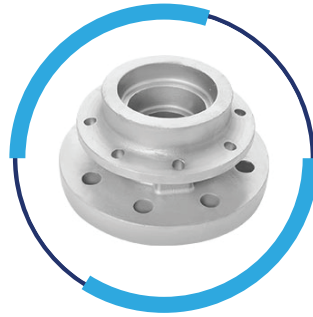
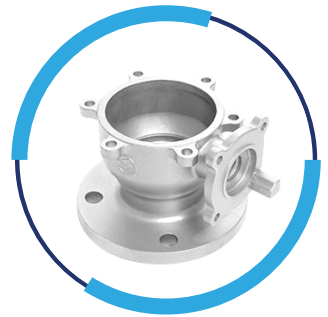


**HEAT TREATMENT**



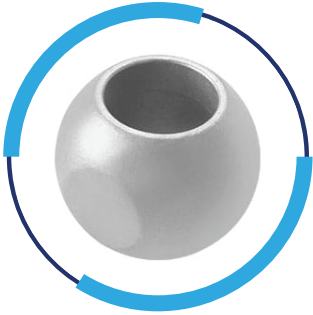
# SHUBHAM TECHNOCAST PRODUCTS

## VALVES:

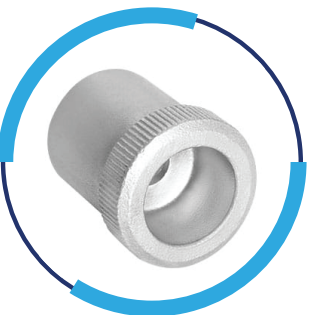




# SHUBHAM TECHNOCAST PRODUCTS



## FIRE PROTECTION:

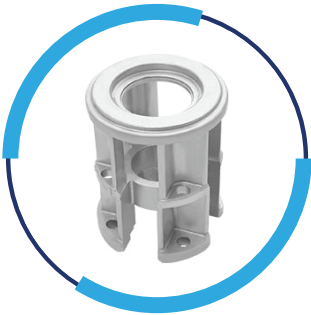
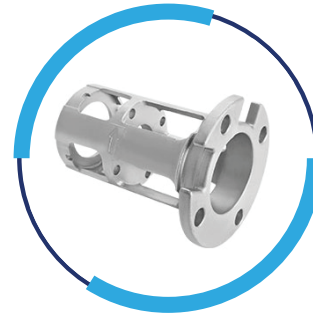
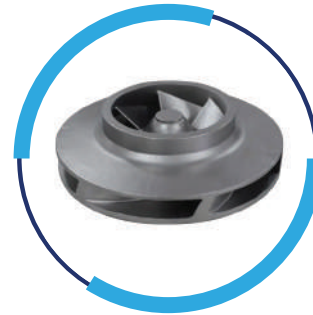
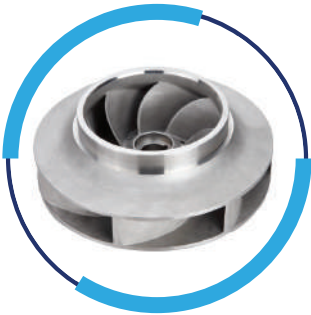






# SHUBHAM TECHNOCAST PRODUCTS

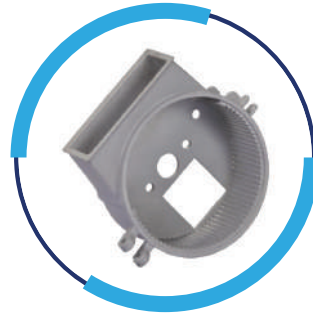
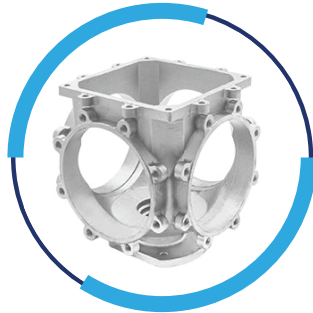
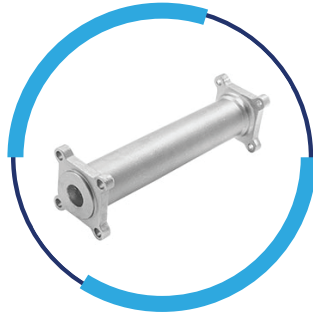
## PUMPS:





# SHUBHAM TECHNOCAST PRODUCTS

## GENERAL ENGINEERING:



OUR BIS APPROVED FINISHED  
**PRODUCTS**

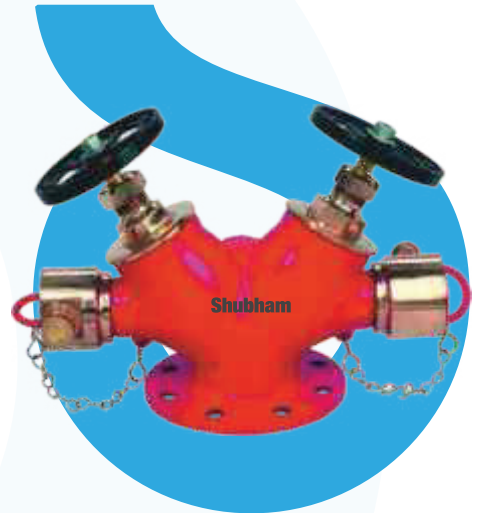


**(D) SINGLE HEAD HYDRANT VALVE:**

<b>PRODUCT CODE</b>	:	STSHHV
<b>MATERIAL</b>	:	Stainless Steel Gun Metal
<b>SIZE</b>	:	As Per IS 5290
<b>PCD</b>	:	145mm & 160mm

**(D) DOUBLE HEAD HYDRANT VALVE:**

<b>PRODUCT CODE</b>	:	STDHHV
<b>MATERIAL</b>	:	Stainless Steel Gun Metal
<b>SIZE</b>	:	As Per IS 5290
<b>PCD</b>	:	180mm



**(D) MALE FEMALE COUPLING:**

<b>PRODUCT CODE</b>	:	ST - MFC
<b>MATERIAL</b>	:	Stainless Steel Gun Metal
<b>SIZE</b>	:	As Per IS 903 63mm





# OUR BIS APPROVED FINISHED PRODUCTS



## TWO WAY INLET BREECHING:

<b>PRODUCT CODE</b>	:	ST - II
<b>MATERIAL</b>	:	C.I BODY WITH SS/GM NRV
<b>INLET</b>	:	100mm NB Flanged inlet.
<b>FLANGE SIZE</b>	:	180mm PCD, 220mm OD, 100mm ID   No. of hole : 08

## THREE WAY INLET BREECHING:

<b>PRODUCT CODE</b>	:	ST - III
<b>MATERIAL</b>	:	C.I BODY WITH SS/GM NRV
<b>INLET</b>	:	100mm NB Flanged inlet.
<b>FLANGE SIZE</b>	:	180mm PCD, 220mm OD, 100mm ID   No. of hole : 08



## FOUR WAY INLET BREECHING:

<b>PRODUCT CODE</b>	:	ST - FW
<b>MATERIAL</b>	:	C.I BODY WITH SS/GM NRV
<b>INLET</b>	:	100mm NB Flanged inlet.
<b>FLANGE SIZE</b>	:	180mm PCD, 220mm OD, 100mm ID   No. of hole : 08





OUR BIS APPROVED FINISHED  
**PRODUCTS**



**ADAPTOR:**

**PRODUCT CODE** : ST - HVC  
**MATERIAL** : Stainless Steel  
Gun Metal  
**SIZE** : As Per IS

**BRANCH PIPE:**

**PRODUCT CODE** : ST - BP  
**MATERIAL** : Stainless Steel  
Gun Metal  
**SIZE** : As Per IS 903  
63mm



**FIRE RRL HOSE PIPE:**

**PRODUCT CODE** : ST - HP  
**MATERIAL** : Rubber & Canvas  
**LENGTH** : 7.5, 15 & 30 Mtr  
**END CONNECT** : Coupling  
**DIMETER** : 63mm





# OUR BIS APPROVED FINISHED PRODUCTS

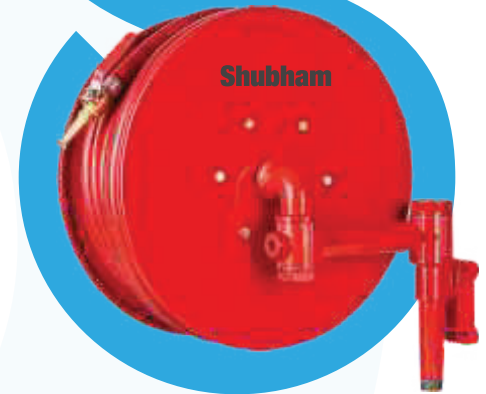


## FIRE RUBBER HOSE PIPE:

<b>PRODUCT CODE</b>	:	ST - HP
<b>MATERIAL</b>	:	Rubber & Canvas
<b>LENGTH</b>	:	7.5, 15 & 30 Mtr
<b>END CONNECT</b>	:	Coupling
<b>DIMETER</b>	:	63mm

## HOSE REEL DRUM:

<b>PRODUCT CODE</b>	:	ST - HRD
<b>MATERIAL</b>	:	MS Sheet & Alu.
<b>TYPE</b>	:	Bombay & Ahmedabad
<b>SIZE</b>	:	As Per ISI



## HOSE BOX:

<b>PRODUCT CODE</b>	:	ST - HB
<b>MATERIAL</b>	:	MS & FRP.
<b>TYPE</b>	:	Single & Double
<b>SIZE</b>	:	As Per ISI





THANK  
YOU



---

## **Shubham Technocast**

G - 1951/2, Rd M, Opp. Jyoti CNC, Gate No.2 ,  
Metoda, Gujrat 360021

**Phone :** 9426528500 , 8905096769

**Email :** sales@shubhamtechnocast.com ,  
shubhamtechnocast@gmail.com

**Web :** www.shubhamtechnocast.com

---